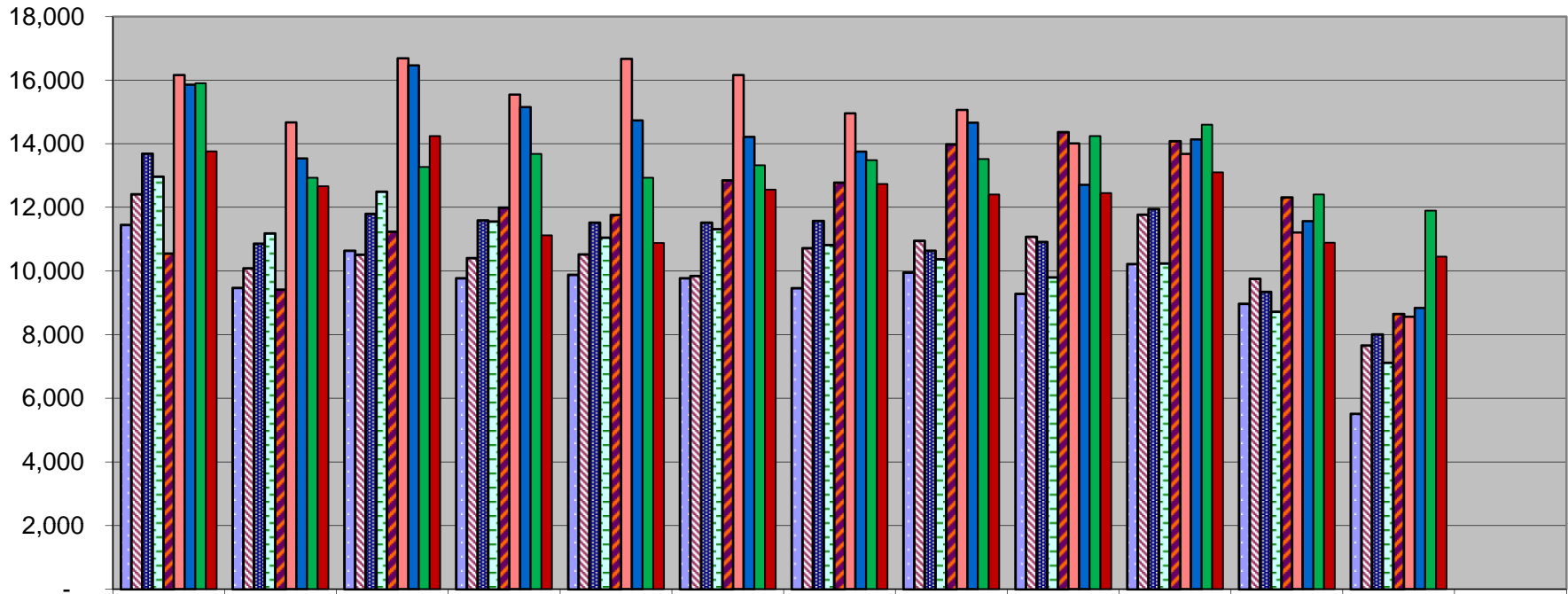


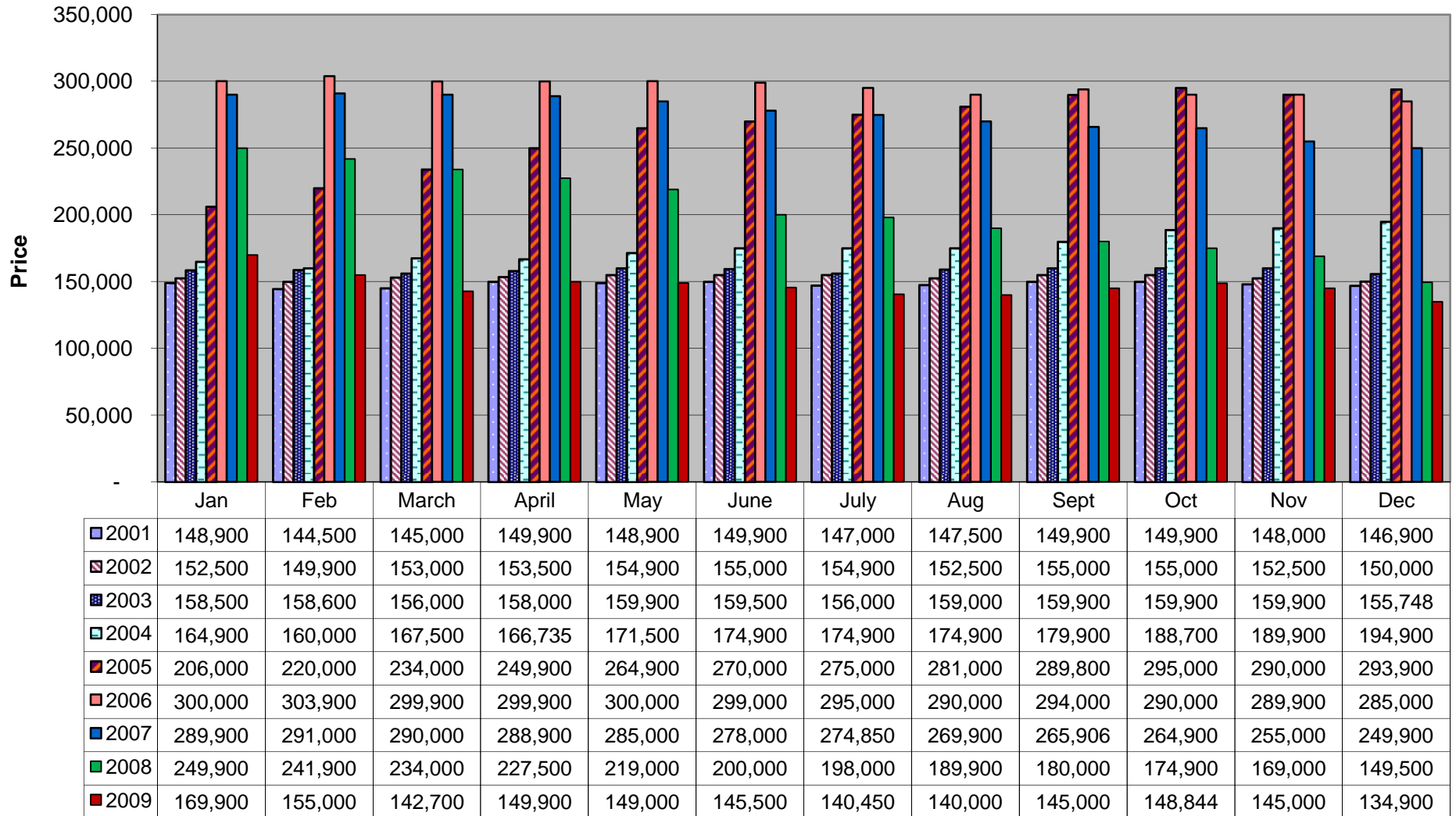
**ARIZONA REGIONAL MULTIPLE LISTING SERVICE, INC.
New Listings Per Month**



	January	February	March	April	May	June	July	August	September	October	November	December	Total
■ 2001	11,455	9,469	10,638	9,773	9,886	9,777	9,465	9,957	9,288	10,216	8,969	5,509	114,402
■ 2002	12,412	10,089	10,514	10,411	10,526	9,843	10,724	10,955	11,076	11,772	9,753	7,663	125,738
■ 2003	13,687	10,865	11,799	11,591	11,521	11,521	11,572	10,641	10,919	11,954	9,346	8,008	133,424
■ 2004	12,963	11,183	12,493	11,559	11,048	11,320	10,814	10,371	9,800	10,238	8,719	7,117	127,625
■ 2005	10,549	9,415	11,237	11,992	11,760	12,855	12,776	13,986	14,369	14,083	12,313	8,653	143,988
■ 2006	16,155	14,670	16,686	15,542	16,670	16,158	14,953	15,063	14,009	13,681	11,211	8,565	173,363
■ 2007	15,857	13,539	16,459	15,153	14,736	14,212	13,751	14,662	12,705	14,137	11,567	8,837	165,615
■ 2008	15,903	12,932	13,274	13,678	12,931	13,322	13,484	13,518	14,241	14,602	12,402	11,894	162,181
■ 2009	13,756	12,661	14,242	11,118	10,876	12,558	12,736	12,403	12,448	13,099	10,889	10,453	147,239

This representation is based in whole or in part on the data supplied by ARMLS. ARMLS does not guarantee nor is in any way responsible for its accuracy.
Data maintained by ARMLS may not reflect all real estate activity in the market.

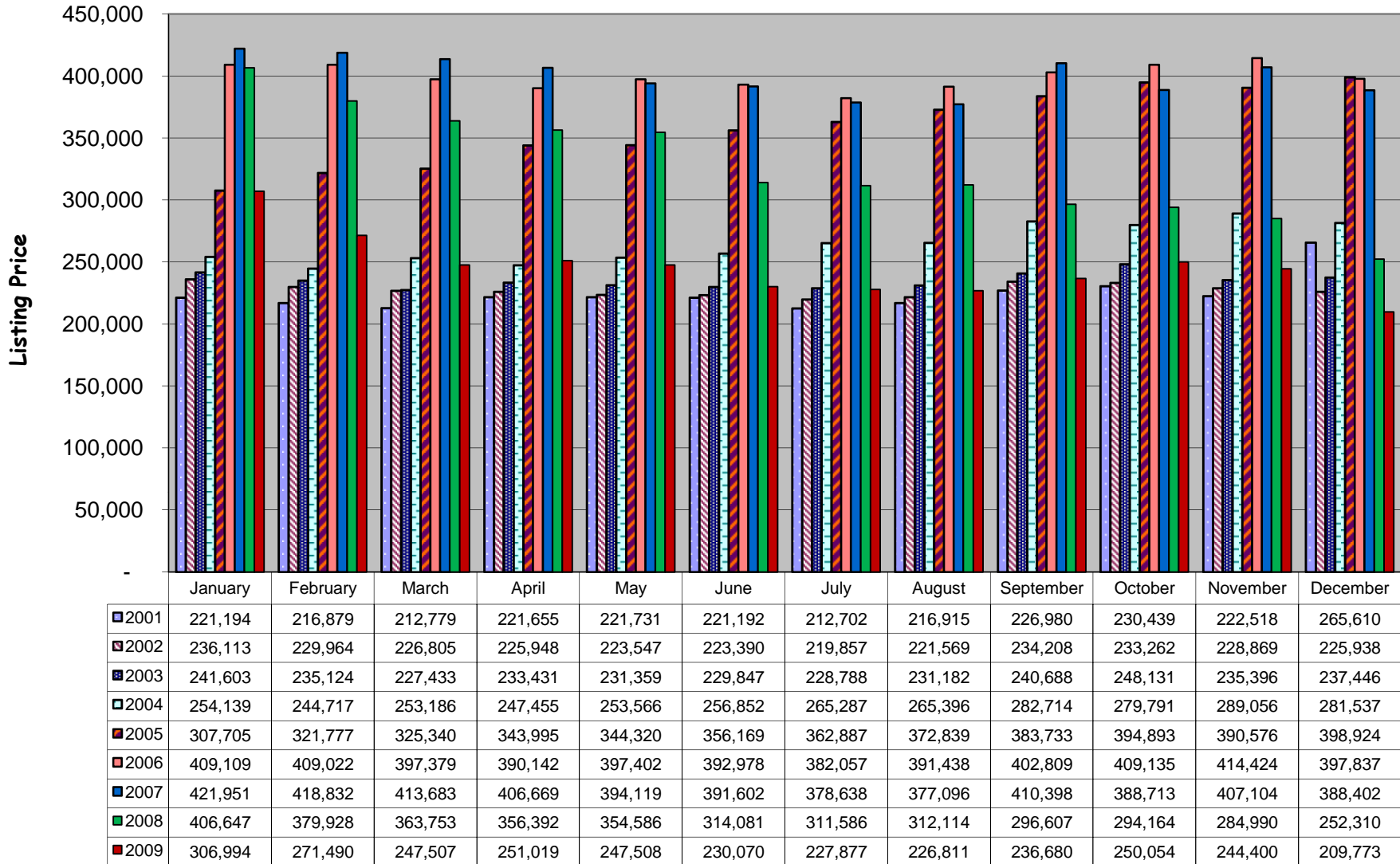
**ARIZONA REGIONAL MULTIPLE LISTING SERVICE, INC.
Median New Listing Price Per Month**



This representation is based in whole or in part on the data supplied by ARMLS. ARMLS does not guarantee nor is in any way responsible for its accuracy. Data maintained by ARMLS may not reflect all real estate activity in the market.

This representation is based in whole or in part on the data supplied by ARMLS. ARMLS does not guarantee nor is in any way responsible for its accuracy. Data maintained by ARMLS may not reflect all real estate activity in the market.

**ARIZONA REGIONAL MULTIPLE LISTING SERVICE, INC.
Average New Listing Price Per Month**



This representation is based in whole or in part on the data supplied to ARMLS. ARMLS does not guarantee nor is in any way responsible for its accuracy. Data maintained by ARMLS may not reflect all real estate activity in the market.